

Driving Directions

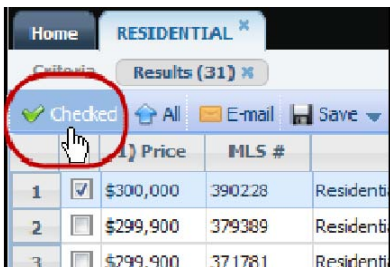
Paragon has the ability to display, print, and email driving directions. Directions can be obtained to drive to a single property or to drive to several properties, routing them in any order you choose. Driving directions can originate from any location, with turn-by-turn directions provided in text or map format.

Note: This Quick Start Guide assumes the user has run a search and selected the properties for which to get the driving directions and that the user has knowledge of the map controls; zoom in, zoom out; and panning the map to the north, south, east, and west.

Show Checked

For best results, limit the display to the properties for which you want driving directions.

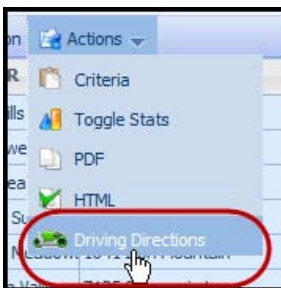
- From the search results spreadsheet, select the properties.
- Click **Checked** in the spreadsheet toolbar. Only the selected listings appear.



Actions

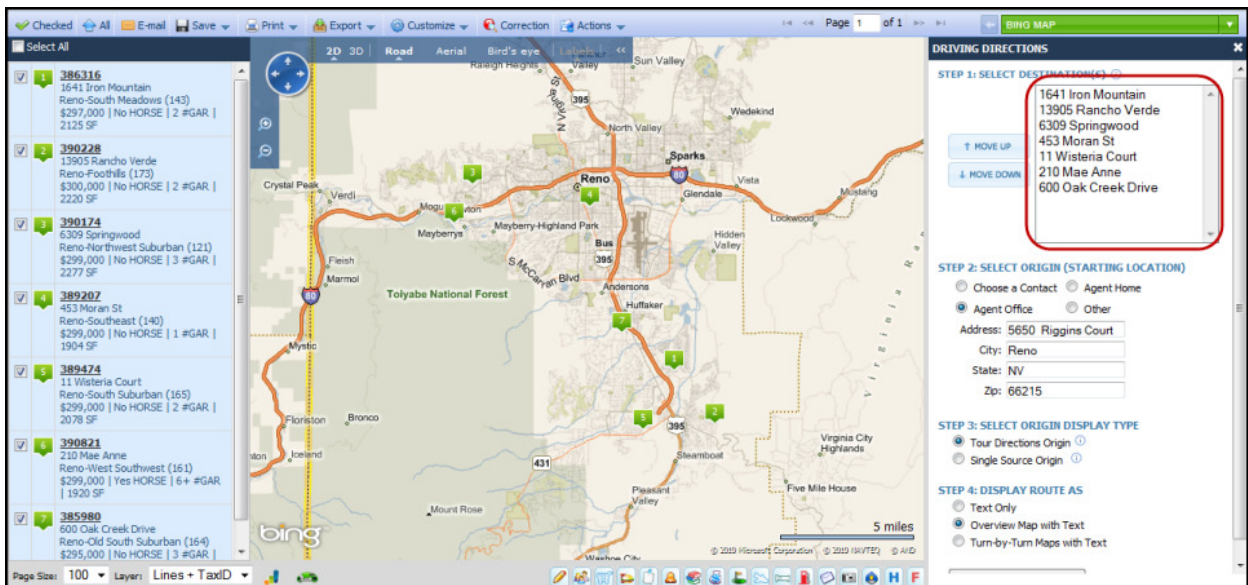
The Driving Directions link is found in the **Actions** drop down menu on the spreadsheet toolbar.

- Click **Actions**.
- Click **Driving Directions**. The Driving Directions window appears.



Driving Directions Window

1. The results section (on the left)
2. The map with color-coded icons shows the property locations (in the middle)
3. The Driving Directions set-up section (on the right)

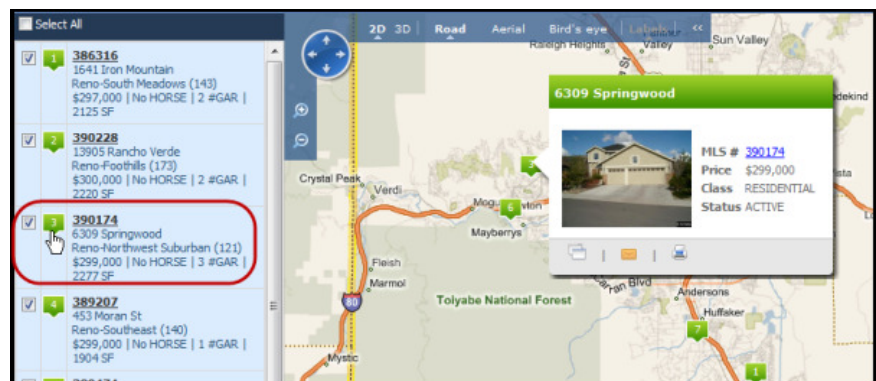


The numbered icons for each listing in the results section corresponds with the numbered icon on the map. The addresses of the listings in the Selection Destinations(s) window appear in the same order as the numbered icons in the result section; e.g., listing results icon 3 corresponds with the number 3 icon on the map. This is also the third listing in the Driving Direction set-up section.

Note: To add additional properties to the list of Selected Destinations:

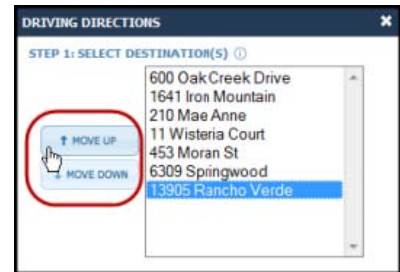
- Select each listing to be included in the Driving Direction by checking the checkbox.
- Click **Checked** to use just the listings selected.

Place the cursor over a listing in the results section displays a listing information call out that points to the listing icon on the map.



Routing the Order of the Properties

- Place the listings in the order in which you wish to visit them:
- Click a listing address in the Destination window
 - Click Move Up or Move Down to place the address in the order in which you want it to appear



Choosing the Starting Location

- The default starting point is the **Agent Office** address entered into the Agent Profile in Paragon.
- Select **Choose a Contact** to display the list of contacts and their address in the Paragon Contact Manager. Select the desired contact and the contact's address is entered as the starting point.
- Select **Agent Home** to display the Agent's home address as the starting point.
- Select **Other** to manually enter an address as the starting point.



Selecting the Origin Display Type

- Select Tour Directions Origin to display the entire list of properties as a route, starting with the first property and ending with the last property selected.
- Select Single Source Origin to show driving directions to each location from the same starting point; e.g., office to the first property, office to the second property, office to the third property, etc.



Choosing the Driving Directions Display

Options for the Driving Direction Display are:


Text Only: Displays turn-by-turn directions as text without a map.

Start	5650 Riggins Court
End	1641 Iron Mountain
Total Distance:	87.2 Miles
Estimated Total Time:	2 hour(s) 1 minute(s)
Instruction	
Distance (m)	
Start	
1. Depart Start on Riggins Ct (West)	0.13
2. Turn LEFT (West) onto Meadow Wood Lr	0.12
3. Turn LEFT (South) onto Neil Rd	0.0
4. Take Ramp (LEFT) onto US-395	1.21
5. At exit 61, keep RIGHT onto Ramp	0.17
6. Keep LEFT to stay on Ramp	0.14
7. Bear RIGHT (South) onto S Virginia St	3.12
8. Road name changes to US-395	0.42
9. Turn LEFT (East) onto SR-341 (Geiger Grade Rd)	1.75
10. Turn LEFT (North) onto Rim Rock Dr	0.21
11. Turn RIGHT (East) onto Virginia Foothills Dr	0.57
12. Bear RIGHT (North-East) onto Rancho Verde Dr	0.12
Arrive at: 13905 Rancho Verde	Subtotal: 8.76

Overview Map with Text: Displays the text directions and includes a map.

- The map shows the starting point as a green flag.
- Each intermediate point is marked with a blue flag.
- The end point is marked with a red flag.


Start 5650 Riggins Court
End 1641 Iron Mountain
Total Distance: 87.2 Miles
Estimated Total Time: 2 hour(s) 1 minute(s)




Instruction	Distance (m)
Start	
1. Depart Start on Riggins Ct (West)	0.13
2. Turn LEFT (West) onto Meadow Wood Ln	0.12
3. Turn LEFT (South) onto Neil Rd	0.8
4. Take Ramp (LEFT) onto US-395	1.21
5. At exit 01, keep RIGHT onto Ramp	0.17
6. Keep LEFT to stay on Ramp	0.14
7. Bear RIGHT (South) onto S Virginia St	3.12
8. Road name changes to US-395	0.42
9. Turn LEFT (East) onto SR-341 (Dejeper Grade Rd)	1.75
10. Turn LEFT (North) onto Rim Rock Dr	0.21
11. Turn RIGHT (East) onto Virginia Foothills Dr	0.57
12. Bear RIGHT (North-East) onto Rancho Verde Dr	0.12

Turn-by-Turn Maps with Text: Displays the Overview Map plus additional, turn-by-turn maps with directions.

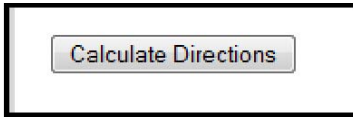
Start 5650 Riggins Court
End 1641 Iron Mountain
Total Distance: 87.2 Miles
Estimated Total Time: 2 hour(s) 1 minute(s)



Instruction	Distance (m)	Map
Start		
1. Depart Start on Riggins Ct (West)	0.13	
2. Turn LEFT (West) onto Meadow Wood Ln	0.12	

Creating the Driving Directions

Click Calculate Directions to create the driving directions.



Driving Directions can be E-mailed and/or Printed.

- Click **E-mail** to E-mail the directions. Driving Directions are sent as an attachment to the recipient's E-mail address.
- Click **Print** to print the directions.
- Click **Refresh** to refresh and/or select a different format for the Driving Directions (Text Only, Overview Map with Text or Turn-by-Turn Maps with Text).

